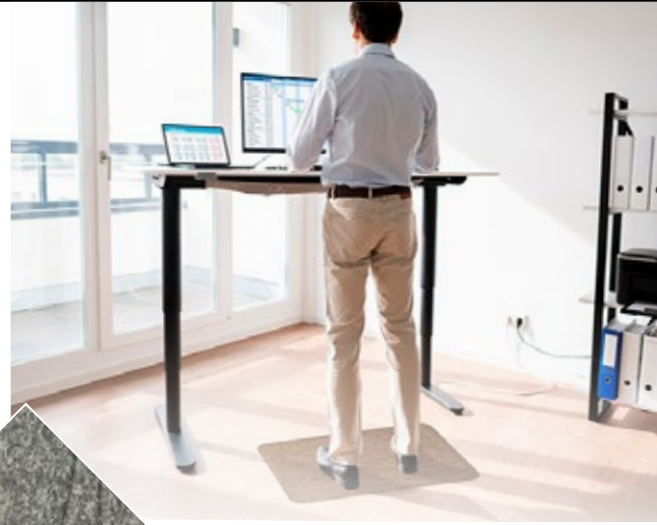


TOUGH COMFORT STANDING DESK MAT ANTI-FATIGUE MAT



Tough Comfort Standing Desk Mats provide workers with a comfortable, healthy alternative to sitting throughout their workday, minimizing the negative effects on the body associated with sitting for long periods of time.



FEATURES & BENEFITS

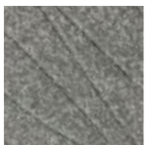
- Polyurethane cushion runs edge-to-edge and provides excellent anti-fatigue properties to alleviate pain from extended standing
- PET fabric surface is permanently bonded to a durable rubber layer that makes the mat resistant to punctures from high heels
- Features bevelled edges, edges will not crack or curl
- Is naturally stain resistant, making it easy to remove stains from the mat
- PET fabric surface is made from 90% recycled content reclaimed from plastic
- Easy to clean just vacuum, hose off and hang to dry



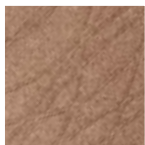
SPECIFICATIONS

Uses	Indoor, dry areas
Materials	Needle-punched, solution-dyed PET molded to nitrile rubber
Thickness	19mm
Dimensions	800mm x 545mm
Flammability	Passes flammability standard CPSC-FF1-70
Weight	2.5kg

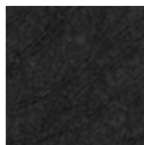
COLOURS



Granite Grey



Sand



Coal Black

RECOMMENDED FOR

- Cash registers
- Customer service desks
- Standing desks
- Laundry rooms
- Workbenches



WE LOVE MATS

1800 300 311 | info@thematgroup.com.au | www.thematgroup.com.au

